

Titan EPS Edge Protection System **from**

ISCHEBECK[®]

TITAN



- Fast, effective edge protection
- Beam and slab application
- Robust construction

ISCHEBECK®

Titan EPS Edge Protection System

TITAN

Designed to deliver maximum performance and versatility with the minimum number of components, Titan EPS offers one of the quickest and most effective means of providing edge protection in a wide variety of situations throughout the construction industry.

Titan EPS boasts a number of unique features designed to enhance productivity, performance and durability, including 'collapsible' panel support brackets, radiused panel corners and fast fitting beam bracket.

The system's dedicated design ensures that Titan EPS components cannot be confused with other construction systems. Together with the small number of components and the customised pallet, the entire package facilitates stock control and simplifies handling on site.



Fast, effective

Fast

Standard Hilti bolt fixing for slab applications and a unique fast fitting bracket for use on beams ensure Titan EPS can be installed quickly and easily to provide immediate protection.

Slab application



Beam application





ve edge protection

Strong

Titan EPS is designed and manufactured to offer excellent strength and durability with square sections and robust panel construction.



ISCHEBECK®

TITAN

Effective

Rapid installation combined with the system's overall rigidity enable Titan EPS to deliver exceptional performance.



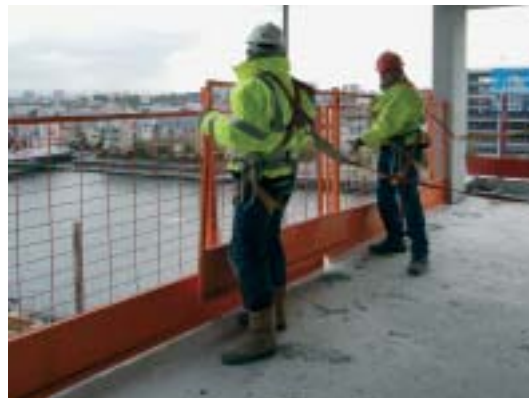
Easy to use

The entire system comprises just four components; mesh guard panel, guardrail post, beam bracket and slab bracket, simplifying stock control and installation.

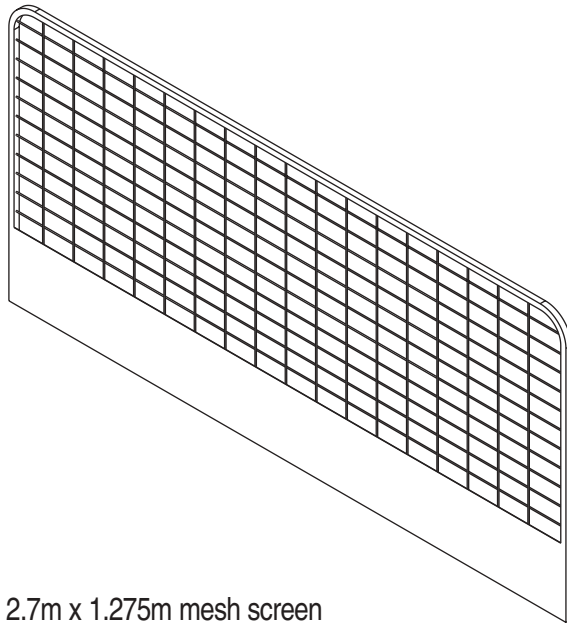
Options

Titan EPS can be supplied as individual components or in a customised pallet containing everything necessary for 60 metres of edge protection.

Supplied in 'hi-vis' orange as standard, Titan EPS is also available in powder coated, galvanised or galvanised and powder coated options to suit individual company requirements.



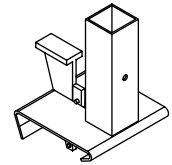
Edge Protection System components



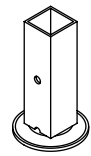
2.7m x 1.275m mesh screen



Handrail post



EPS Beam Bracket



EPS Slab Bracket

edge protection



ISCHEBECK

TITAN



Ischebeck Titan Group

Founded in Germany over 120 years ago Ischebeck is renowned internationally for its aluminium formwork and false work systems, trench support systems and ground engineering products.

Ischebeck Titan Ltd

The company operates from headquarters centrally located in the heart of the UK.



Product Availability

Substantial stocks of equipment are available ex-stock from the company's strategically located 4-acre distribution site, with most main product lines available nationwide on a 48-hour delivery. Products are available for both hire and outright purchase.

Technical Support

We will participate in concept stage development. Providing input on applications, production rates, budget design, programming and costings. Active for on site support and training. We can provide guidance on industry special European and national standards.



HEAD OFFICE

John Dean House
Wellington Road
Burton upon Trent
Staffordshire DE14 2TG
Tel: 01283 515677 Fax: 01283 516126
www.ischebeck-titan.co.uk
E-mail: sales@ischebeck-titan.co.uk

NORTHERN REGIONAL OFFICE & DESIGN OFFICE

Hollinwood Business Centre
Albert Mills Albert Street
Hollinwood Oldham OL8 3QP
Tel: 0161 682 4732 Fax: 0161 684 3603
E-mail: technical@ischebeck-titan.co.uk

Since our policy is one of continuous improvement we reserve the right to change without prior notice the specifications and methods of construction mentioned in this document. No responsibility whatsoever can be accepted for any errors or omissions in, or misinterpretation of the contents. Products must be used in conformity with safe practices and applicable codes and regulations. Photos and details shown are for general guidance only and may vary according to circumstances. For specific information refer to Ischebeck Titan Limited. Copyright reserved.